

N

NK

A

N

D

:NK O

D

E

M

/M

F

I

:

Four horizontal lines for text input.

I

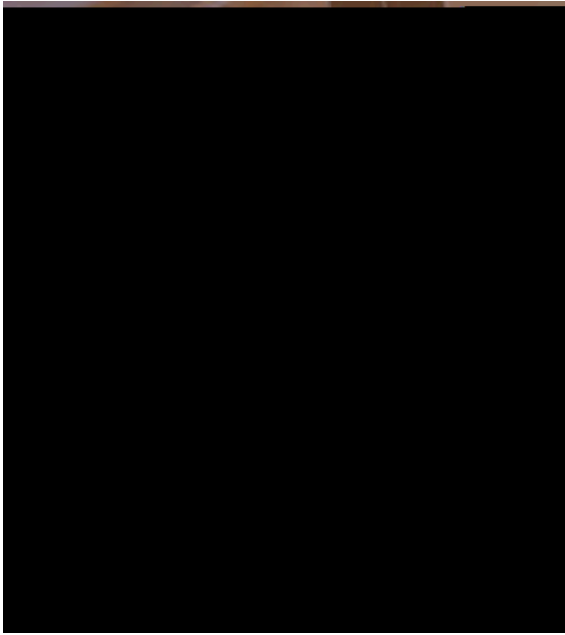
D

:

|

Two horizontal lines for text input.

|  
|



## "The Best Job On Campus"

H\Uhg'k \UhdUgh'cf]YbhUj]cb "YUXYfg'k ]"~hY"~mci "

[fUXY'cZÎK ï

## The *Extended* Norse Family Parent-to-parent support around the country

- ◁ Are you a parent or family member who lives outside of a 30-mile radius of NKU?
- ◁ Despite your distance, do you feel connected to NKU and the Norse family?
- ◁ Would you be willing to offer support, answer questions, and connect new or potential parents who live in your region to resources on-campus?

If you are interested in helping parents in your community (whether it's Louisville, Kentucky or Rochester, New York) feel supported and connected to NKU, please email Ashley Grimes, Coordinator of Parent and Family Programs, at [parents@nku.edu](mailto:parents@nku.edu)

